



ECONOMICS & TOURISM & YORKTOWN

We believe there are viable economic models that promote growth in tourism and do not have the detrimental impacts of the ocean-class ships that Princess, Holland, and others will want to bring Yorktown, and that will fundamentally alter the character of this small historic village.

We strongly believe that allowing Princess Cruise Lines in Yorktown will damage our culture, degrade the environment, and open a Pandora's Box that we will not be able to shut. There is evidence to support these concerns from well-documented experiences of ports across the globe in articles, reports, and first-hand accounts.

PRESERVE THE CHARACTER OF HISTORIC YORKTOWN

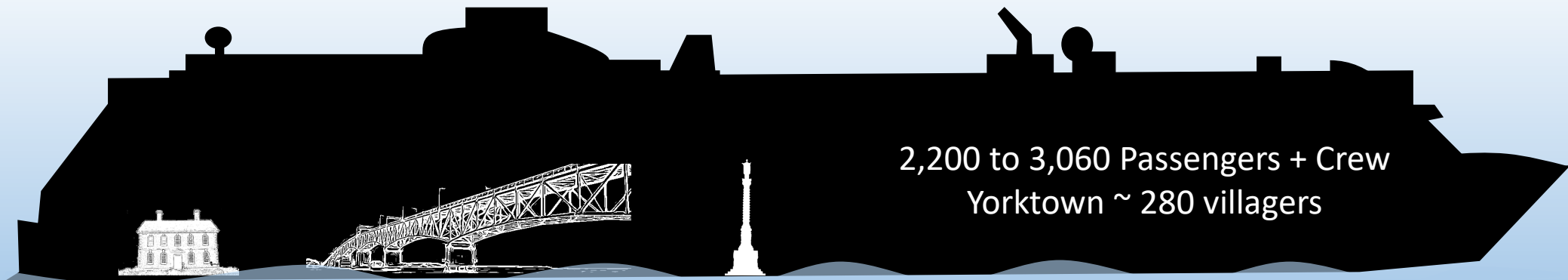
- A small community of about 280 residents along the York River
- 1781 Battle of Yorktown was the pivotal event in the American Revolution leading to independence.
- Princess Cruises wants to build a pier and make Yorktown a port-of-call



The scale of these ship, both in size and number of passengers is incompatible with a small village.



The scale of these ships is IMMENSE!



**Nelson
House**

**Coleman
Bridge**

**Victory
Monument**

2,200 to 3,060 Passengers + Crew
Yorktown ~ 280 villagers

*Image heights roughly to scale
relative to A Princess cruise ship*

The scale of these ships is incompatible with Yorktown

It's floating city with over 3000 people



IT IS A QUESTION OF SCALE
We support reasonable tourism

ISLAND PRINCESS
(one of the smallest Princess ships)

UNREASONABLE

AMERICAN EAGLE
(frequents Yorktown currently)

REASONABLE

PRINCESS CRUISE SHIP
(One of their smallest ships)

York High School

York High Football Field

Bailey Field

3x the length a football field

York County School
Division Maintenance

DO THE MATH (assumes 1 ship at a time)

(3000 Passengers – 1000 Stay on ship) / 50 passenger/bus =

40 Busses in Yorktown and on the Parkway



THERE ARE ALTERNATE TOURISM APPROACHES

River-cruise class ships

Higher price point customers

Much more eco-friendly

- cleaner fuels

- no waste dumping scrubbers

- less air pollution

No “Pay to Play” schemes

Willing to use local sources

Willing to partner on Yorktown excursions



What is a Bad Business Partner?

- Does your partner obey the law?
- Does it treat your local businesses fairly?
- Does your partner treat its people well by following US labor regulations?
- Is your business partner reliable, responsible, transparent?
- Is your partner a good steward of the environment?
- Does your partner pay its fair share of taxes in the United States?
- Does your business partner care about your local culture or just its bottom line?



Cruise's Medallion payment program draws concern

Concerns stem from the 17.99% service fee that participating merchants would be... From that fee, 7% would go back to

3. Cruise ship employees often work 70-hour weeks without any days off.
Base salaries can range from \$1,000 to \$1,500 a month. For more invisible jobs, such as in laundry or the warehouse, that number dips to \$600. Those who

Carnival Cruises, Stop Sinking The Climate

5. Cruise lines are buying their way out of responsibility.
In the last decade, the cruise industry spent over \$31 million lobbying the U.S government. Several legislators

tax code, cruise companies are able to register their ships with countries that have more lenient laws than the US - an act called flying a "flag of convenience" - and avoid paying into the US tax

One corporation to pollute them all

PRESS RELEASE
Princess Cruise Lines to Pay Largest-Ever Criminal Penalty for Deliberate Vessel Pollution

How the Cruise Industry Disregards Pollution, Low Wages, and Disease

PRESS RELEASE
Princess Cruise Lines Pleads Guilty to Second Revocation of Probation

Cruise Line	Sewage Treatment	Air Pollution Reduction	Water Quality Compliance	Transparency	2022 Final Grade
Princess Cruises	D+	B-	D-	F	D

Carnival/Princess are already showing questionable business practices

- Lack of local community involvement
 - Majority of the community was blind-side on this issue
 - Expansion plans - Watermen's
- Omitting/missing of key pollution facts
- Outsourcing tours
- High end economic promises, not consistent with other ports
- Holland American 2025 announcement without local permission

“Critical aspects of the Company that led it to being a recidivist criminal endure. By the last year of probation, some employees still reported a blame culture where leadership is unwilling to learn from mistakes and resists feedback and efforts to face its shortcomings until legally forced to do so, despite convicted prior criminal activity.”

September 2022 --- Judge Seitz

11:17

Port Yorktown-Williamsburg VA cruise ship schedule shows timetable calendars of all arrival and departure dates by month. The port's schedule lists all ships (in links) with cruises going to or leaving from Yorktown-Williamsburg VA, Virginia. To see the full itineraries (ports of call dates and arrival / departure times) and their lowest rates – just follow the corresponding ship-link.

2025 June

Day:	10 June, 2025 Tuesday
Ship:	ms Volendam
Arrival:	08:00
Departure:	18:00

Day:	10 June, 2025 Tuesday
Ship:	Island Princess
Arrival:	08:00
Departure:	18:00

Day:	20 June, 2025 Friday
Ship:	Island Princess
Arrival:	08:00

AA cruisemapper.com



WARNINGS FROM CHARLESTON, SC AND JUNEAU, AL

Charleston & Juneau have battled the cruise industry and now have policies to ship limit the industry “to minimize crowding and pollution generated by massive ships and thousands of tourists”

DON'T THINK IT CAN'T HAPPEN HERE

Letter Excerpts

Over the years, the cruise ship industry touted economic benefits of cruise traffic, while downplaying the harmful consequences. The boats pollute our air, create effective no-go zones for residents, and tax city infrastructure and public services. All a very sugar-coated, hidden agenda.

A high volume of tourists at one time will negatively impact the charm of Yorktown and surrounding areas, as well as the historic tourism and fishing industries. Cruise ships will be allowed to discharge minimally treated sewage into the harbor, or nearby. Sewage and gray water contain viruses, pathogens, metals and a host of other harmful contaminants. This will impact your local waters and pollute fish and shellfish that are an integral part of your local foods.

---- Melanie J. Charleston, South Carolina

You are in a critical moment, and I am encouraged to see you organizing so quickly. The industry are colonizers, and they go through stages in their colonization and exploitation. I think you could be in the position to be assertive and in their face and turn them away. If they start coming, they will get locals who sell out and every local who gets money from them will make it harder to stop.

They promise the sun and the moon. They will externalize all costs, make demands that have you giving up what is dear to you, and frame a lot of "facts" that are not facts.

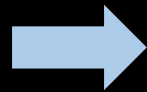
Listening to the Princess CEO... Building the cruise business is long term... Guests need to love Yorktown.... we heard similar false claims in Juneau.

---- Karla Hart - Juneau, Alaska

The Cruise Industry Will Expand in Yorktown

- Bar Harbor, Charleston, Seattle, Sitka, Juneau, Monterey Bay, Key West, Venice, Barcelona, Amsterdam, Marseille, Bergen, and more trying to ban or limit cruise ships
- Initial phase of the Watermen's pier is already funded - \$7.5m from Commonwealth

Journal of Cultural Heritage
Management and Sustainable
Development



I. Introduction

Over the past three years, the number of cruise ships docking in Charleston, SC has grown exponentially. In 2007, 33 cruise ships arrived in the small southern city.



Expansion is the plan!

Sent: Wednesday, January 11, 2023 11:33 AM
To: Williams, Darren <darren.williams@yorkcounty.gov>
Subject: [EXTERNAL] EYES ONLY NOT FOR PUBLIC DISCLOSURE

ESTIMATES:
*2024 - Starting in May/June UP TO 6 visits per year (tendered ashore) with 3000 passengers per visit
*2025-2026 - UP TO 18 visits per year with 3000 passengers per visit
*2026+ - UP TO 27 visits per year with 3000 passengers per visit

Concept drawings Watermen's Museum Pier EXPANSION IS ALREADY STARTING



Proposed site
of the pier



RIVER POLLUTION & MORE

Water Pollution

- Exhaust scrubber discharge
- Bilge water
- Sewage
- Gray water
- Solid waste

Air Pollution

- Toxic sulfur, nitrogen oxides
- Soot
- CO₂ - greenhouse gas

Underwater Noise, Light Pollution

- Stresses marine life



The York River watershed contains more than 250 species of fish, 190 species of birds, 50 species of mammals, 36 species of reptiles, and 26 species of amphibians.

This fragile environment needs our protection



A TOXIC SOUP

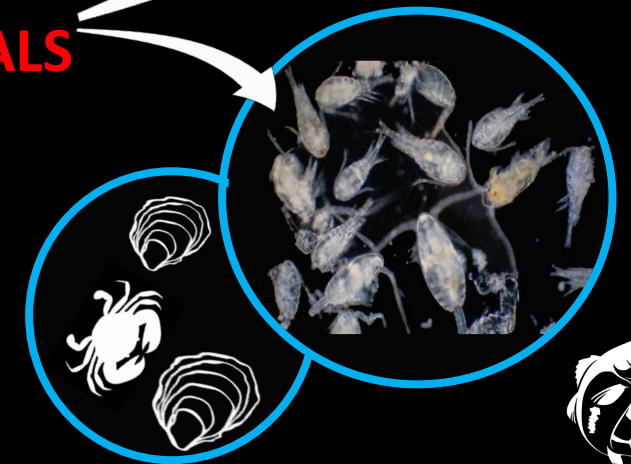
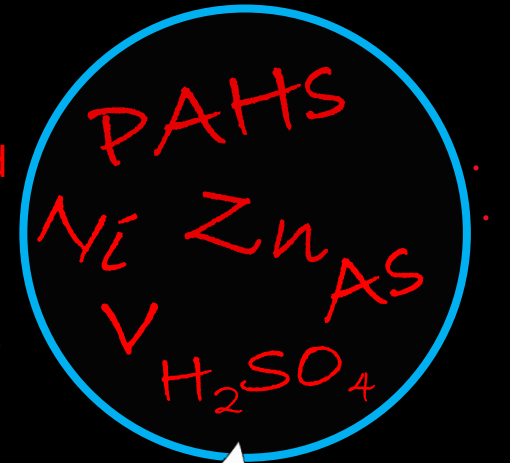
Air Pollution → Water Pollution

- Cruise ships frequently burn dirty Heavy Fuel Oil, high sulfur, low grade inexpensive fuels. Traditionally “bunker fuel.”
 - Source: [icct](#) Scrubber Fact Sheet
- Cruise lines tout their use of Exhaust Gas Cleaning Systems, which use seawater to “scrub” the exhaust. The wash water is then dumped overboard
- Scrubber wash water is highly **acidic**, which is particularly harmful to oysters and shellfish
- Global cruise ship scrubber discharge is **~1.5 BILLION TONS/YEAR**
- This cruise industry chose this polluting option to save money

More than 120 ports have BANNED open loop scrubbers!

**TOXIC CARCINOGENS
AND HEAVY METALS**

Sulfuric Acid
Zinc
Nickel
Arsenic, etc.

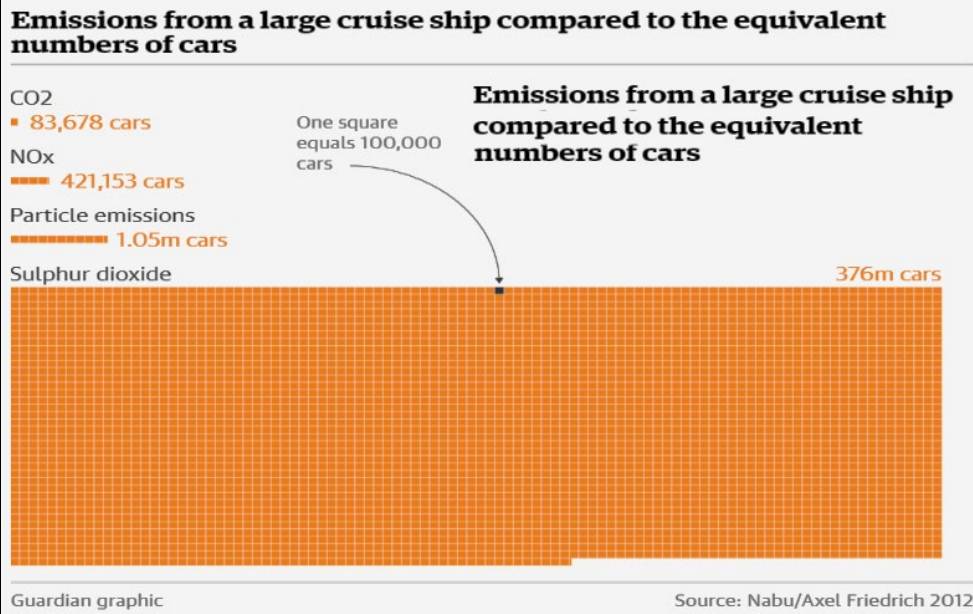


**Harms plankton
and other sea life**

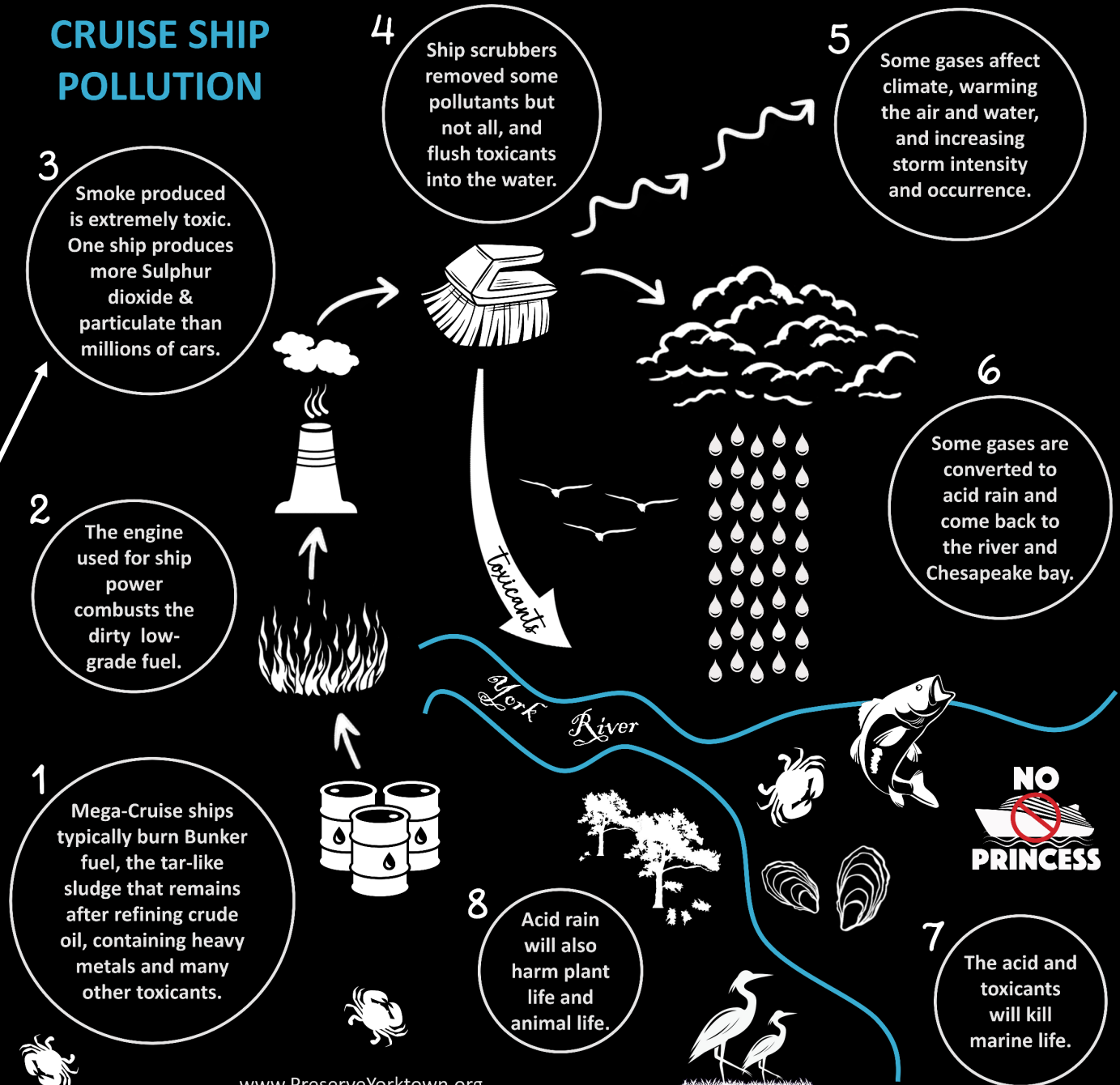
TOXIC WASTE IS RELEASED DIRECTLY INTO THE WATER FROM SCRUBBERS

SULFURIC ACID COMES BACK AS ACID RAIN

CO2 IS ABSORBED BY THE WATERS AND CAUSES ACIDIFICATION



CRUISE SHIP POLLUTION





ACCIDENTS HAPPEN!

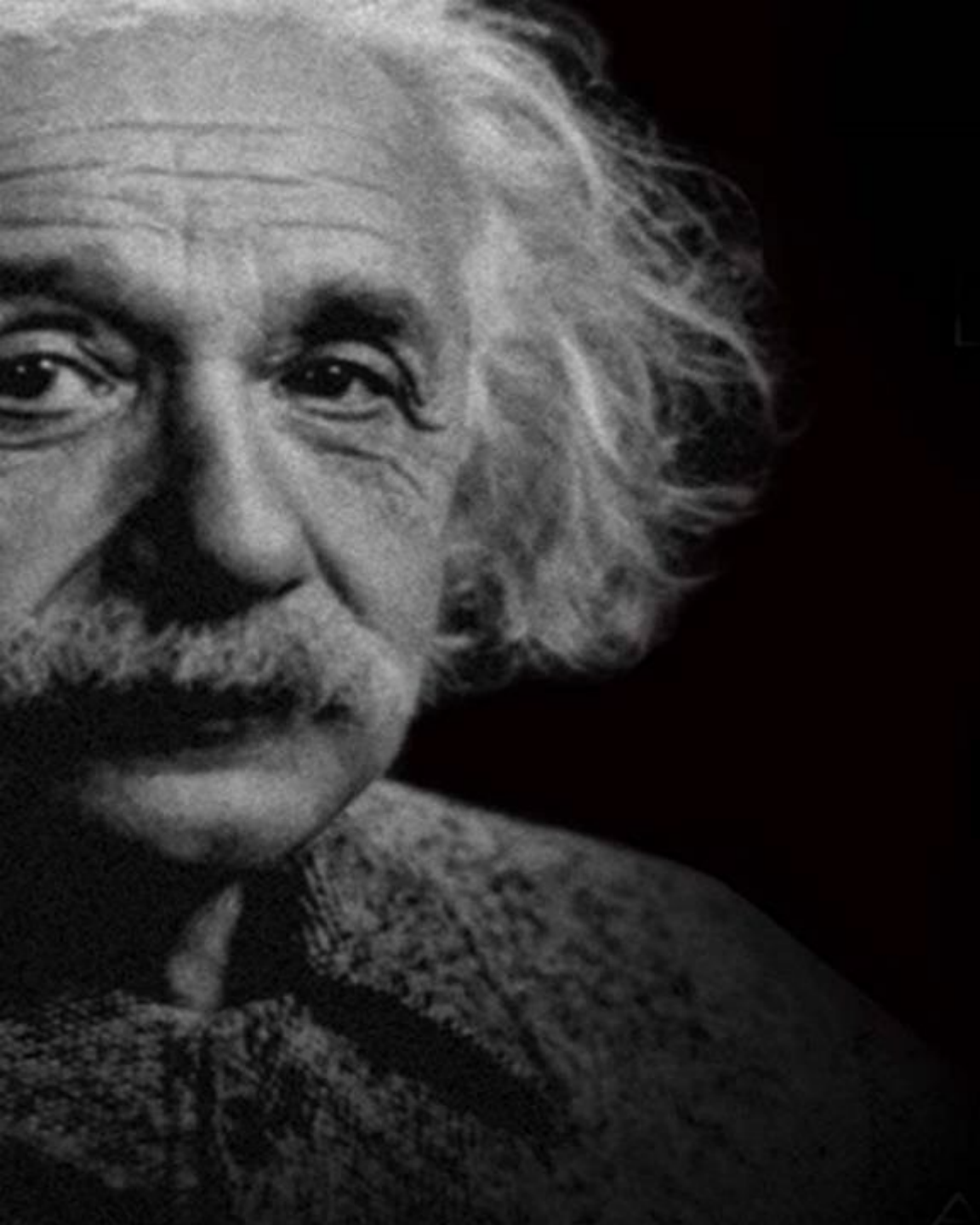
The last one by Carnival – November 2023!

Scrubber Sludge from Sky Princess

Source [Cruise Law News](#)

A growing number of people and organizations are going on the record against the cruise industry in Yorktown. See the latest petition numbers [here](#).





Why is Yorktown expecting something different than what has happened at other port cities that the mega-cruise industry has exploited?

“INSANITY is doing the same thing over and over and expecting different results.”

-- Albert Einstein



THIS IS JUST THE TIP OF THE ICEBERG
TAKE TIME TO LEARN ABOUT CRUISE INDUSTRY IMPACTS

PRESERVE YORKTOWN



Act Now:
Scan the Petition
Link & Sign

Act Now:
[Click to email the
York County Board
of Supervisors](#)

LEARN MORE

www.PRESERVEYORKTOWN.org